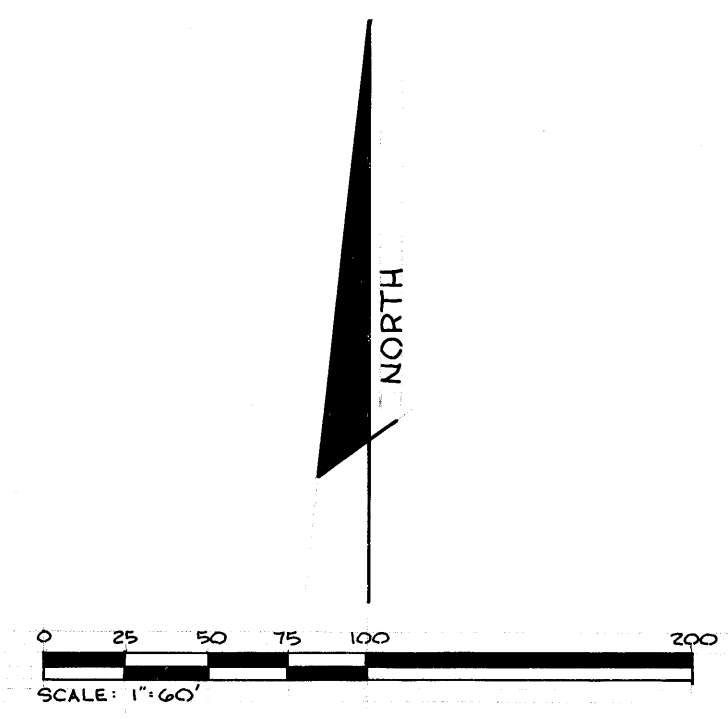
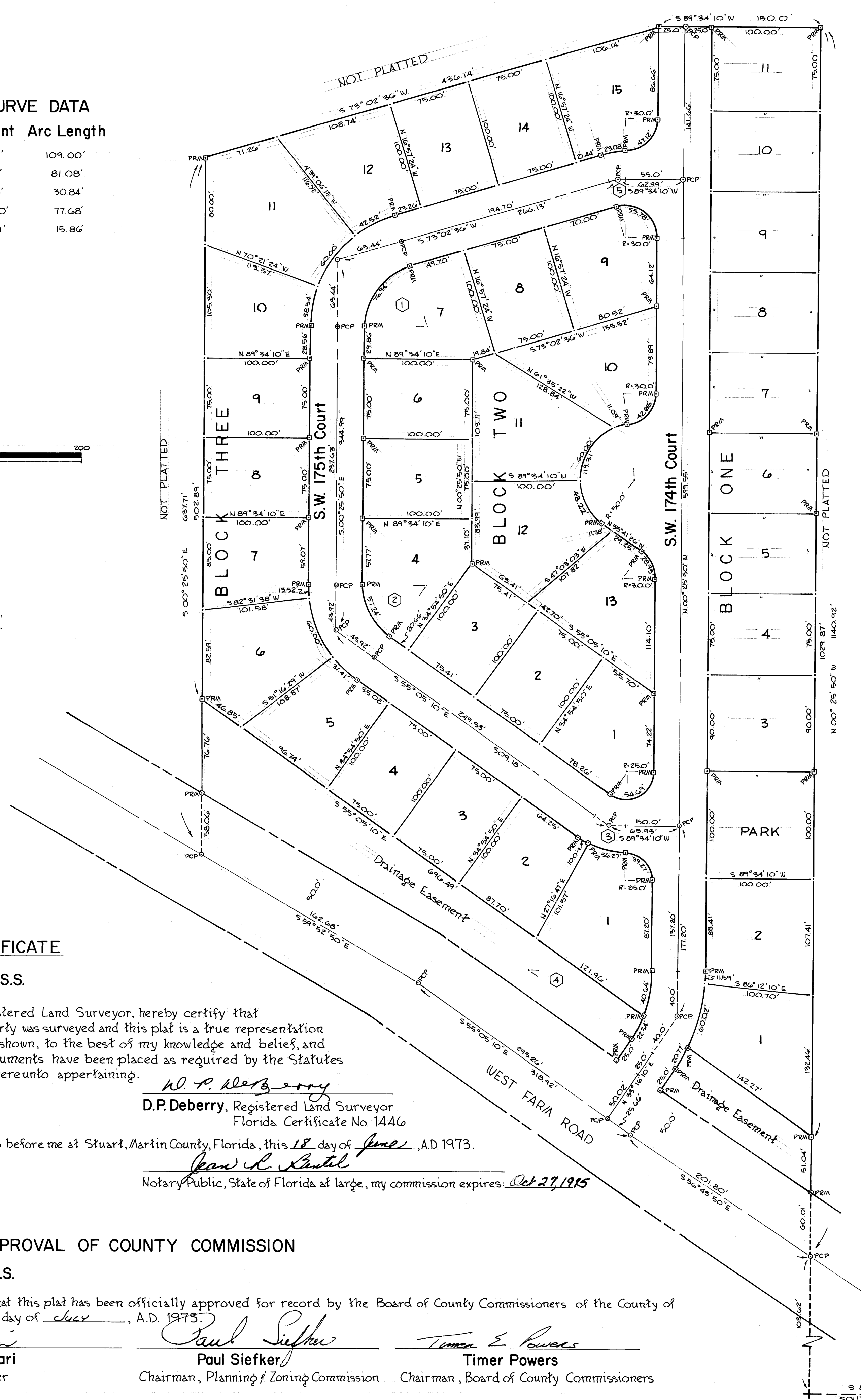


**CENTERLINE CURVE DATA**

No.	Radius	Delta	Tangent	Arc Length
①	85.00'	73°28'26"	63.44'	109.00'
②	85.00'	54°39'20"	43.92'	81.08'
③	50.00'	35°20'40"	15.93'	30.84'
④	132.07'	33°42'00"	40.00'	77.68'
⑤	55.00'	16°31'34"	7.99'	15.86'



Basis of Bearing: East line of Section 1 bearing of N 0°17'00" W as shown on amended plat of Booker Park recorded in Plat Book 2, Page 37, Martin County, Fla.



# WESTBROOK

A SUBDIVISION OF A PART OF THE NORTH ONE-HALF (1/2) OF SECTION 1, TOWNSHIP 40 SOUTH, RANGE 38 EAST, MARTIN COUNTY, FLORIDA.

STATE OF FLORIDA } S.S.  
 COUNTY OF MARTIN }  
 I, Louise V. Isaacs, County Clerk, Martin County, Florida, hereby certify that this plat has been examined and that it complies in form with all the requirements of the Statutes of the State of Florida pertaining to maps and plats and that this plat has been filed for record in Plat Book 5, Page 98, Public Records of Martin County, Florida, this 9th day of August, A.D. 1973.  
 Louise V. Isaacs, clerk  
 Martin County, Florida  
 By Chris de Manpassant

File No. 198253

**LEGAL DESCRIPTION**

Beginning at the Northeast corner of Section 1, Township 40 South, Range 38 East, thence proceed South 0°17'00" East along the East line of Section 1 for a distance of 2594.50 feet to the Southeast corner of the North one-half (1/2) of said Section 1, Thence proceed South 89°28'50" West along the South line of the North one-half (1/2) of said Section 1 for a distance of 2730.00 feet to a point. Thence proceed North 0°25'50" West for a distance of 103.62 feet to a point in the centerline of West Farm Road and the point of beginning. (1) Thence continue North 0°25'50" West for a distance of 1140.92 feet to a point. (2) Thence proceed South 89°34'10" West for a distance of 150.00 feet to a point. (3) Thence proceed South 73°02'36" West for a distance of 436.14 feet to a point. (4) Thence proceed South 0°25'50" East for a distance of 637.71 feet to a point in the centerline of West Farm Road. (5) Thence proceed South 59°52'50" East along said centerline for a distance of 162.68 feet to a point. (6) Thence proceed South 55°05'10" East along said centerline for a distance of 318.92 feet to a point. (7) Thence proceed South 56°43'50" East along said centerline for a distance of 201.80 feet to the point or place of beginning. Excepting any and all right of way for West Farm Road.

**CERTIFICATE OF OWNERSHIP AND DEDICATION**

STATE OF FLORIDA } S.S.  
 COUNTY OF MARTIN }

Migrant Housing Development Incorporated, a Florida Corporation, by its duly elected President, Arthur F. Holland, and by its duly elected Secretary, James E. Upchurch, acting by and with authority of its Board of Directors, certify ownership by said Corporation of the property described herein, and does hereby dedicate and set apart all of the streets, walks, alleys, thoroughfares, parks and other open spaces, canals and drainage or other easements shown on this plat of WESTBROOK to the use of the general public forever.

In Witness Whereof, the undersigned Corporation has caused these presents to be executed by its President and attested by its Secretary.

Attest:  
Arthur Speedy  
 Witness  
Robert Montgomery  
 Witness  
 By: Arthur F. Holland  
 Arthur F. Holland, President  
James E. Upchurch  
 James E. Upchurch, Secretary

**ACKNOWLEDGEMENT**

STATE OF FLORIDA } S.S.  
 COUNTY OF MARTIN }

Before me, the undersigned Notary Public, personally appeared Arthur F. Holland, President, and James E. Upchurch, Secretary, of Migrant Housing Development Incorporated, a Florida Corporation, to me known to be the individuals described in and who executed the foregoing certificate of dedication, and they duly acknowledged before me that they executed the same, as such officers for and in behalf of said Corporation.

Witness my hand and official seal at Martin County, Florida, this 16 day of July, A.D. 1973.

Mary Tilton  
 Notary Public, State of Florida at large, my commission expires: 3-11-75

**CONSENT OF MORTGAGE**

STATE OF FLORIDA } S.S.  
 COUNTY OF MARTIN }

The United States of America acting by and through Farmer's Home Administration, United States Department of Agriculture, hereby joins and consents to this plat and to the areas hereon which it might claim under the mortgage held by it on said property.

Adrienne Monte  
 Witness  
A. Mike Albert  
 Witness  
Charlie B. Hudnell  
 Charlie B. Hudnell, County Supervisor

**TITLE CERTIFICATION**

STATE OF FLORIDA } S.S.  
 COUNTY OF MARTIN }

Title Security Company, Stuart, Florida, hereby certifies that apparent record title is in the Corporation which executed the Certificate of Ownership hereon. Dated this 12 day of JULY, A.D. 1973.

Jess Wright  
 Jess Wright, Authorized Agent

**SURVEYOR'S CERTIFICATE**

STATE OF FLORIDA } S.S.  
 COUNTY OF MARTIN }

I, the undersigned Registered Land Surveyor, hereby certify that on June 12, 1973, this property was surveyed and this plat is a true representation of the lands described and shown, to the best of my knowledge and belief, and permanent reference monuments have been placed as required by the Statutes of the State of Florida thereunto appertaining.

D.P. Deberrry  
 D.P. Deberrry, Registered Land Surveyor  
 Florida Certificate No 1446

Subscribed and sworn to before me at Stuart, Martin County, Florida, this 18 day of June, A.D. 1973.

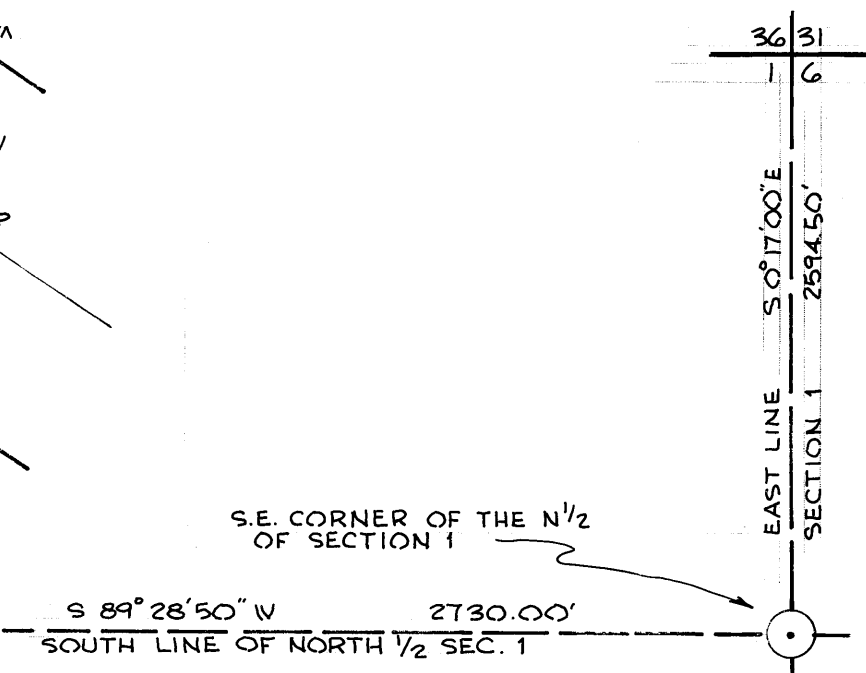
Joan L. Burtel  
 Notary Public, State of Florida at large, my commission expires: Oct 27, 1975

**CERTIFICATE OF APPROVAL OF COUNTY COMMISSION**

STATE OF FLORIDA } S.S.  
 COUNTY OF MARTIN }

It is hereby certified that this plat has been officially approved for record by the Board of County Commissioners of the County of Martin, Florida, this 17 day of June, A.D. 1973.

Kenneth Ferrari      Paul Siefker      Timmer E. Powers  
 Kenneth Ferrari      Paul Siefker      Timmer E. Powers  
 County Engineer      Chairman, Planning & Zoning Commission      Chairman, Board of County Commissioners



FILED FOR RECORD  
 1973 JUN -9 PM 2:13  
 LOUISE V. ISAACS  
 COUNTY CLERK